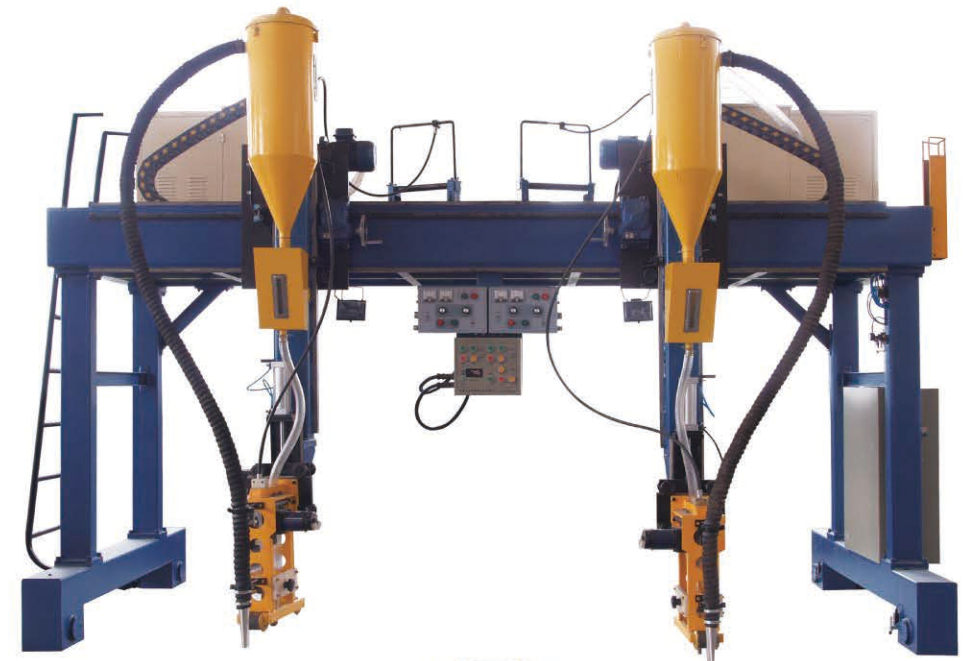


LHA龙门式自动焊接机
LHA Gantry Auto-welding Machine



主要技术参数 Main technical parameters

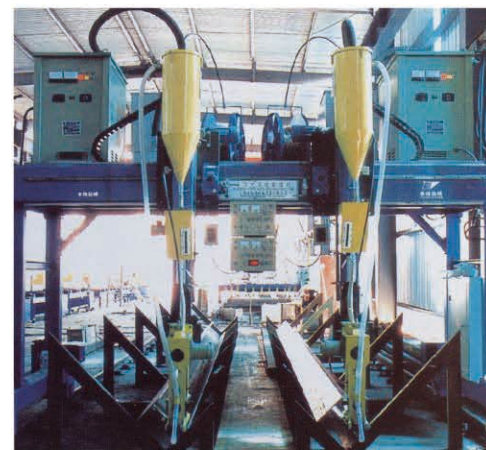
规格型号	Type	LHA
腹板高度 (mm)	Web Height (mm)	200-1500
翼板宽度 (mm)	Flange Plate Width (mm)	200-800
焊机型号	The type of welding machine	MZ-1000型自动埋弧焊机 2 台 2 MZ-100 automatic submerged arc
焊接形式	The form of welding	船形焊 Boat Welding
焊接速度 (m/min)	The welding speed	0.15-1.5
返程速度 (m/min)	The returning speed	1.5
轨距 (mm)	Rack distance	4000
气源压力 (Mpa)	The pressure of air supply	0.2-0.8
整机功率 (KW)	The power of complete machine	10 (不含焊机) Without welding machine



主要功能及特点 Main functions and features

H型钢自动焊接机采用交流变频器调速控制，具有运动平稳可靠，返程还具有自动跟踪导弧对中机构，能确保焊枪自动、准确对中。主机与焊接实行联动控制，并配套焊剂自动输送回收系统，操作方便，效率高。

H-type steel automatic welding machine uses frequency converter gear for speed regulation, ensuring the stable operation. When returning, with automatic tracking equipment of centering, it ensures the welding gun automatically and precisely to locate centration. The main engine and welding carry out gang control equipped with flux automatic transmission and recovery system, which can be operated easily and with high efficiency.



集中控制的龙门焊
Centrally controlled gantry Welding

