

特制焊接工装
Special welding fixtures



电力杆焊接专机
Welding machine power pole



电力杆自动焊接专机
Automatic welding machine power pole



法兰焊接专机
Flange welding machine

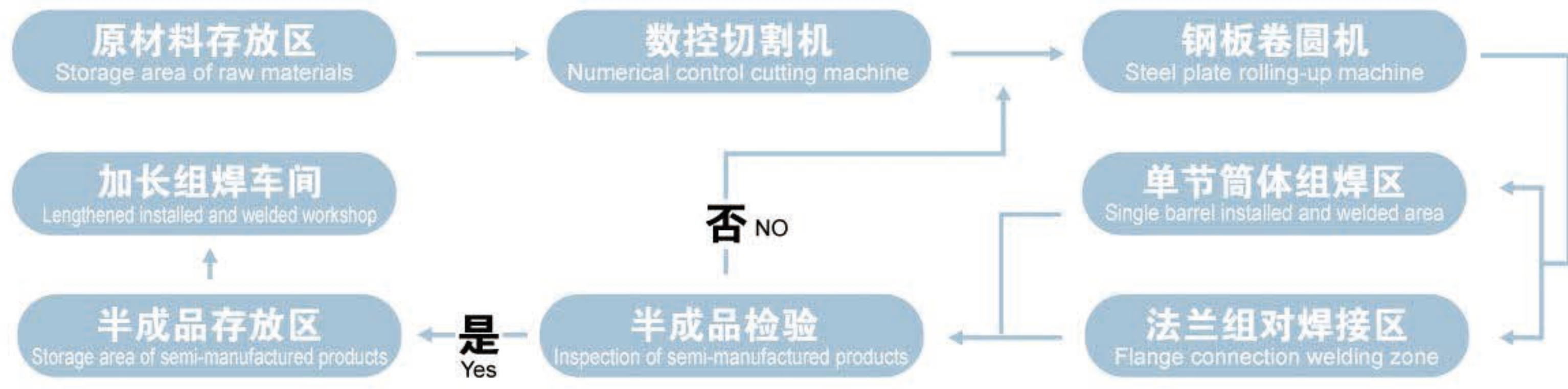


筒体焊接流水线（定制）
Simplified welding assembly line (custom)

风塔焊接生产线整厂工艺流程
The process of welding procedure of wind-power tower in the whole factory

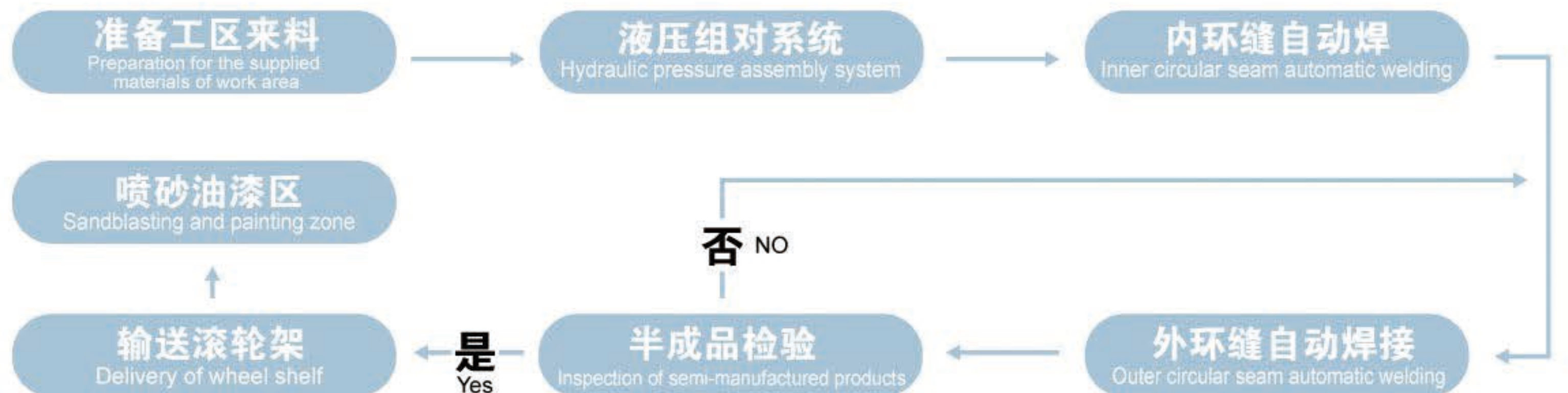
单节塔筒加工区工艺流程

The process of single tower drum processing zone



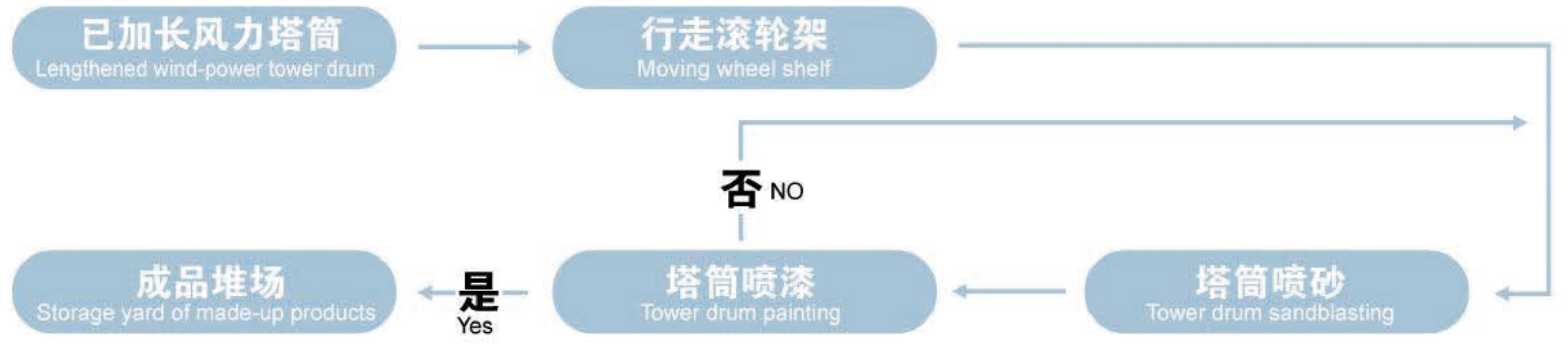
多节塔筒加工区工艺流程

The process of multisection tower drum processing zone



塔筒喷砂漆区工艺流程

The process of tower drum sandblasting and painting zone



风塔生产线
Wind tower production line



塔筒外环焊接
Outer circumferential welding



塔筒内环焊接
Inner circumferential seam welding



塔筒内环焊接
Inner circumferential seam welding



塔筒内外环焊接流水线
Welding line of outer circumferential seam



环缝组对中
Fitting up



环缝组对中
Fitting up

风塔焊接现场
The spot of wind tower welding



组对完成
Finish



成品储运
Stock and transportation of finished tower



定制喷砂滚轮架
Painting rotator



定制喷漆滚轮架
Sand blasting rotator

主要功能及特点
Main functions and features

风力发电设备作为目前新能源开发的一个重要发展方向，其主要设备组成部分——风力塔架的制作，在国内正逐渐兴起。本生产线主要分为板材数控切割下料、单节筒体直缝焊接、法兰与筒体短节组焊、筒体逐节组对组成内外环缝焊接、喷砂除锈、防腐喷漆烘干等工序。整条生产线全自动化操作，提高了工作效率。

Wind power generation equipment, as the current development of new energy, is an important direction of development, whose main equipment-the production of wind tower, is gradually on the rise in the country. The production line is divided into some mainly processes, thus the CNC cutting sheet feedstock, single-cylinder straight seam welded, the short welding of flange and cylinder, group composed of cylinder-by-section welded inside and outside the ring, scrub rust, anti-corrosion spray drying. The whole production line is fully automated operation, improving the efficiency.



风塔使用中
The use of wind towers